

New North

Gouache Paintings

by

Martin Berkovitz

While the series North was initially expressive of the Canadian Inuit culture, it has through the years expanded to embrace the whole northern polar world. The series moves through the Siberian tribes all the way to the Thule culture of northern Canada and Greenland which has its origins in Alaska. New North presents an ancient culture of at least ten thousand years. It explores the different shamanic worlds as well as the ecological issues that effect not only the polar regions, but the world as a whole.



Realm of the North
29.5 x 40 inches, 2012

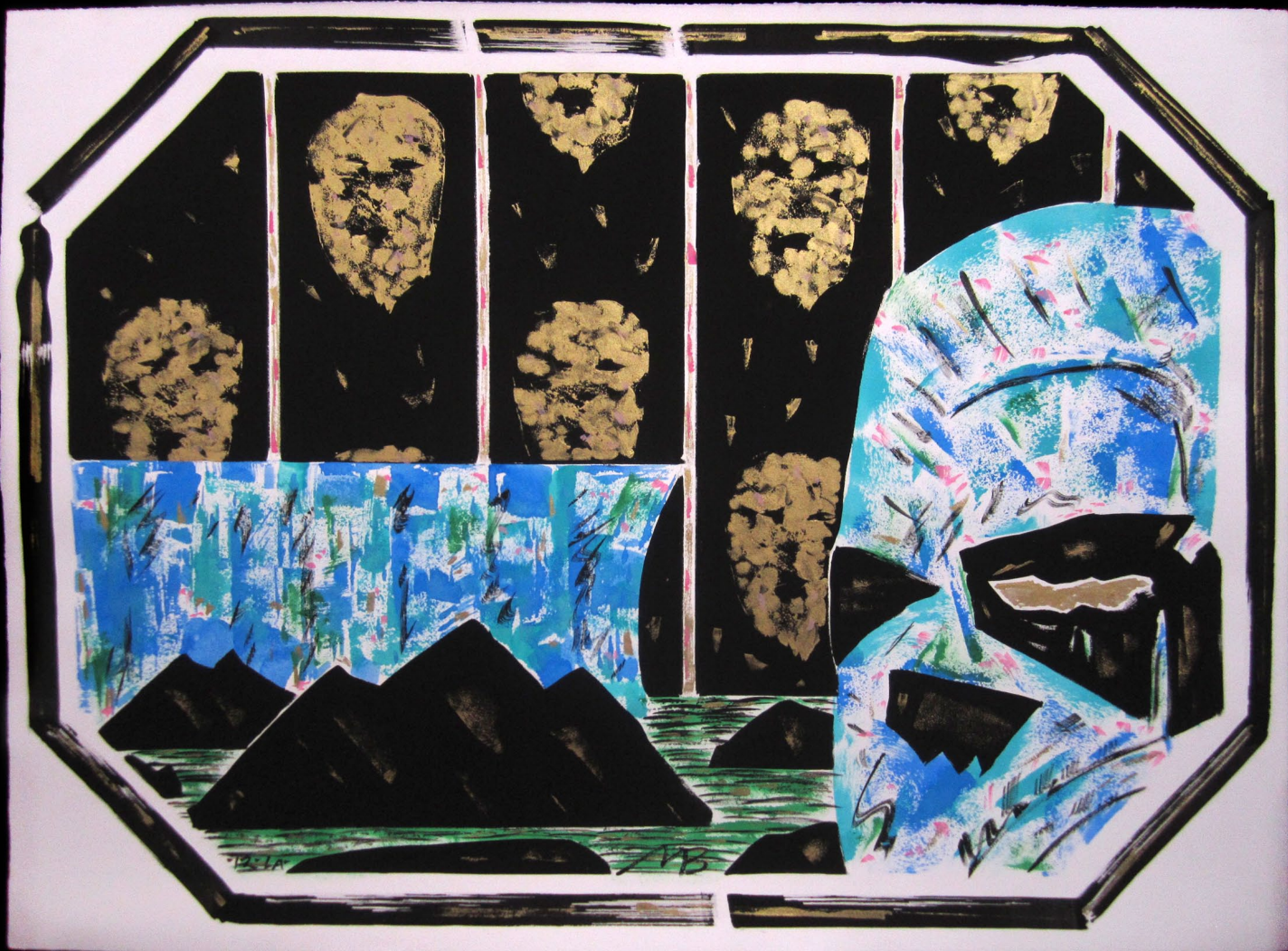


Eastern Flight
29.5 x 40 inches, 2012



Flying East

29.5 x 40 inches, 2012



Look Out
29.5 x 40 inches, 2012



Fresh Water Mother
29.5 x 40 inches, 2012



Golden Sea
29.5 x 40 inches, 2012



Golden Day
29.5 x 40 inches, 2012



White and Shining
29.5 x 40 inches, 2012



Passage Guardian
29.5 x 40 inches, 2012



Fair Presence
29.5 x 40 inches, 2012



Aurora's Call
29.5 x 40 inches, 2012



Star Rock
29.5 x 40 inches, 2012



Forest Profile
29.5 x 40 inches, 2012



Dark Forest

29.5 x 40 inches, 2012



Snowy Owl : Night Bog
29.5 x 40 inches, 2012



Forgotten Factory
29.5 x 40 inches, 2012



Night in the Forest
29.5 x 40 inches, 2012



Raven Diptych
40 x 29.5 inches each, 2012



Song of the Great Spirit
30 x 40 inches, 2010



Mother Father
30 x 40 inches, 2010



From Thule
30 x 40 inches, 2010



Arctic Presence
30 x 40 inches, 2010



Mask and Meteorite
22 x 30 inches, 2010



Horizon
22 x 30 inches, 2010



Three Abreast
22 x 30 inches, 2010



Lights in the Forest
22 x 30 inches, 2010

Contact:

Martin Berkovitz

(310) 780-9617

info@martinberkovitz.com