

# The Cythereans

Oil Paintings on Linen

by

Martin Berkovitz

The Cytherians were conceived in 2008 as a loving tribute to my wife and companion of 39 years, Leila Carman. Little did I know I would paint them in 2012, two years after losing her to cancer.

Cytherea is the island of Venus, so beautifully realized by the great 18th century French artist Antoine Watteau. It is the place of love and enchantment, beyond this world's sorrow, the ideal of human happiness.



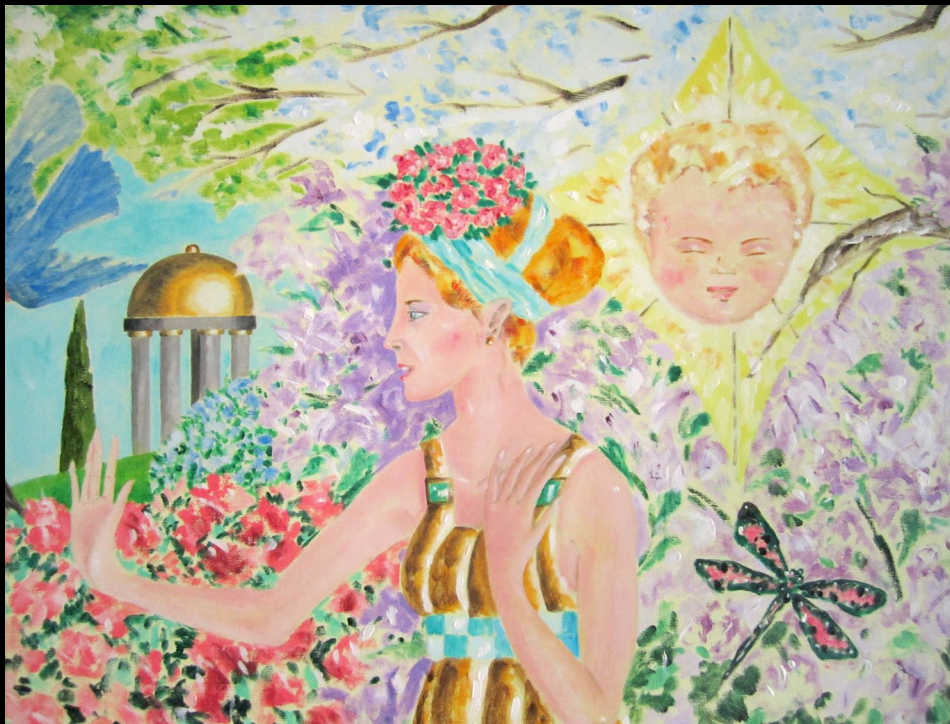
Embarkation for Cytherea  
46 x 66 inches, 2012



Details from *Embarkation for Cytherea*



Embarkation from Cytherea  
46 x 66 inches, 2012



Details from *Embarkation from Cythera*

Contact:

Martin Berkovitz

(310) 780-9617

[info@martinberkovitz.com](mailto:info@martinberkovitz.com)